

COMPRESSION COLUMN LOAD CELL FOR WEIGHBRIDGES

capacities 10t - 60t



This self-centering column load cell is manufactured from high quality stainless steel and has lightning surge arrestors fitted as standard together with a high specification polyurethane cable.

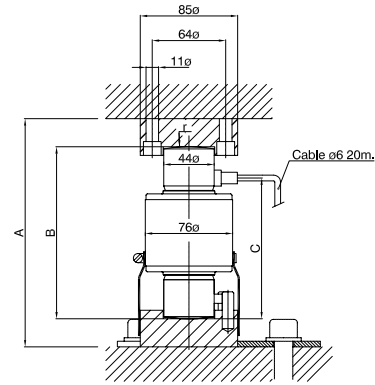
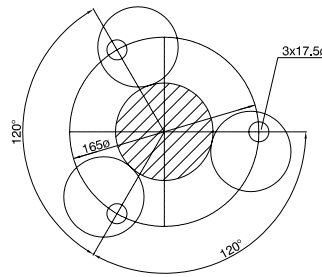
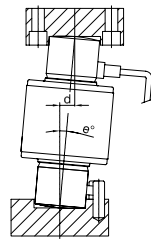
A comprehensive range of capacities is available. The Model T34 cell is designed specifically for weighbridge applications, for which mounting cup accessory sets in either stainless steel or nickel plated alloy steel are available as options. The T34 also has applications in tank weighing. For applications in aggressive environments where stress corrosion or acid attack is an issue, a special parylene coating can be specified as an option.

- Stainless steel load sensor
- Hermetically welded and sealed to IP68/IP69K
- In-built surge arrestors for lightning protection
- Mounting accessories available
- Simple installation
- 3 year warranty
- Self-centering column design with anti-rotation pin
- 4000 divisions OIML R60 Class C
- Class III L NTEP approval
- Pre-corner adjustment optimised for multi-cell systems
- Atex and high temperature versions available



T34

technical specification...



T34 Load Cell

	Load cell specification	Units
Load Cell Capacities	10, 15, 20, 30, 40, 50, 60	t
Rated Output	2.0 +/- 0.1%	mV/V
Combined error	< +/- 0.013	%*
Non-repeatability	< +/- 0.015	%*
Creep (30 minutes)	< +/- 0.012	%*
Temperature Effect on Zero Balance	< +/- 0.002	%* / °C
Temperature Effect on Span	< +/- 0.0012	%* / °C
Compensated Temperature Range	0 to +50	°C
Operating Temperature Range	-50 to +70	°C
Safe Overload	150	%*
Ultimate Overload	350	%*
Zero Balance	< +/- 2	%*
Input Resistance	800 +/- 5	Ω
Output Resistance	705 +/- 5	Ω
Insulation Resistance	> 5000	MΩ @100v DC
Recommended Supply Voltage	10	V
Maximum Supply Voltage	15	V
Cable Length	20	m
Cable Material	Polyurethane	
Protection Class	IP68, IP69K	
Nominal Shipping Weight	15t, 20t	2.5 kg
	30t	2.6 kg
	40t, 50t	2.8 kg
	60t	3.8 kg
	Mounting Accessories	3 kg

*All percentages are related to Rated output

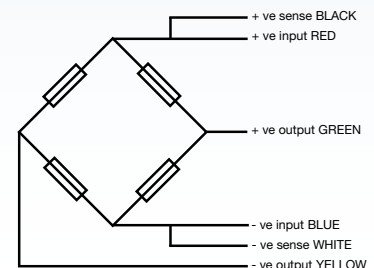
Model T34 ATEX Certification

Code	Temperature Class	Parameters	Application
II 1 G D Ex ia IIC T4...T6 Ga Ex ia IIIC T135 °C...T85 °C Da Ex ta IIIC T85 °C Da	T4	Pi = 1.3W	Gas Zones 0, 1, 2 with safety barriers Dust Zones 20, 21, 22 without safety barriers
	T5	Pi = 0.6W	
	T6	Pi = 0.2W	

Dimensions

Capacity	15t, 20t	25t	30t	40t, 50t	60t
A	200	200	200	200	260
B	150	150	150	150	210
C	123	123	123	123	153
d max.	13	13	13	13	11
e° max.	5°	5°	5°	5°	3°
r sph. radius	130	150	160	180	220

All dimensions are in mm



Electrical Connections

Via 6 wire, 5.7mm diameter, screened polyurethane cable.
Screen not connected electrically to load cell.

Construction

Load cell manufactured from stainless steel

Options

Mounting accessory set comprising stainless steel or nickel plated alloy steel top and bottom mounting cups, rubber gaiter and centering plates

Thames Side Sensors India Pvt. Ltd

A subsidiary of Thames Side Sensors Ltd UK

A/35, New Empire Industrial Estate, Kondivita Lane, J.B.Nagar, Andheri (East), Mumbai 400 059
T: +91 22 2831 00 54 E:sales@thames-side.in www.thames-side.in



Issue: In/T34.07.13

Our policy is one of continuous product enhancement. We therefore reserve the right to incorporate technical modifications without prior notification.

