

RETAIL WEIGHING SOLUTION™

CL-501 SERIES

It's a must-have scale for you shop!!

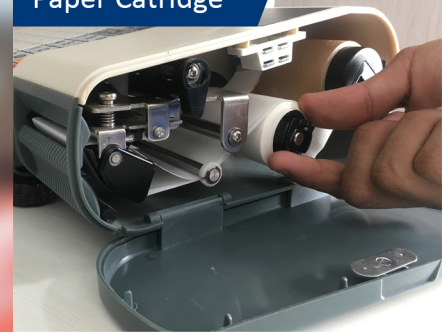
- Flexible & reliable network system (wired/wireless)
- Easy loading paper cartridge
- Free format label design
- User friendly PC software



LCD Display 5" Colour



Easy Loading Paper Cartridge



Direct PLU Keys & Function Keys



LCD display 5" Colour Easy loading

Import & Export data via USB

Direct PLU keys & function keys

CAS

CL-501 SERIES

Hardware

Steady PLU keys

The embossing membrane keypad. Double-click function provides easy access to the key's secondary PLU, totaling in double of PLU key numbers.



Large display

Large full graphic LCD 5" colour display is suitable for any environment. (208 x 48 dot graphic LCD).

- Tare/Weigh /Unit /Price : 4 / 5 / 6 / 7 digits



High speed printer

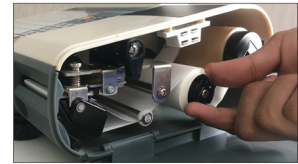
High speed thermal printer supports label/ticket printing. Guaranteed satisfaction with 100mm/s speed and 202dpi resolution.



Paper cartridge

Cartridge loading type supports quick and easy replacement of new label roll.

- Various paper support
- Auto measuring system



Various interface connections

It supports RS-232c, wired/wireless Ethernet, and USB Device.

Menu system

No need to scroll through menus for programming settings. Unique 4 digit 'Menu Code' entry pin helps pinpoint the desired program field.

ex) Menu code '1120' is for editing PLU name.

Import & export data via USB

PRODUCT LINE UP

- CL-501 is compatible with all CAS label printing scales in the same network
- Combined wide LCD looks better



CL-501 LINE UP

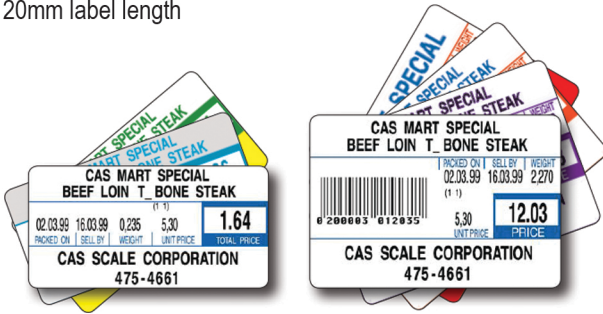


Software

Label Formats

There are 45 preset labels installed in the scale and additional 20 formats can be modified freely with CL-Works PC program.

- Continuous label/ticket
- Up to 120mm label length



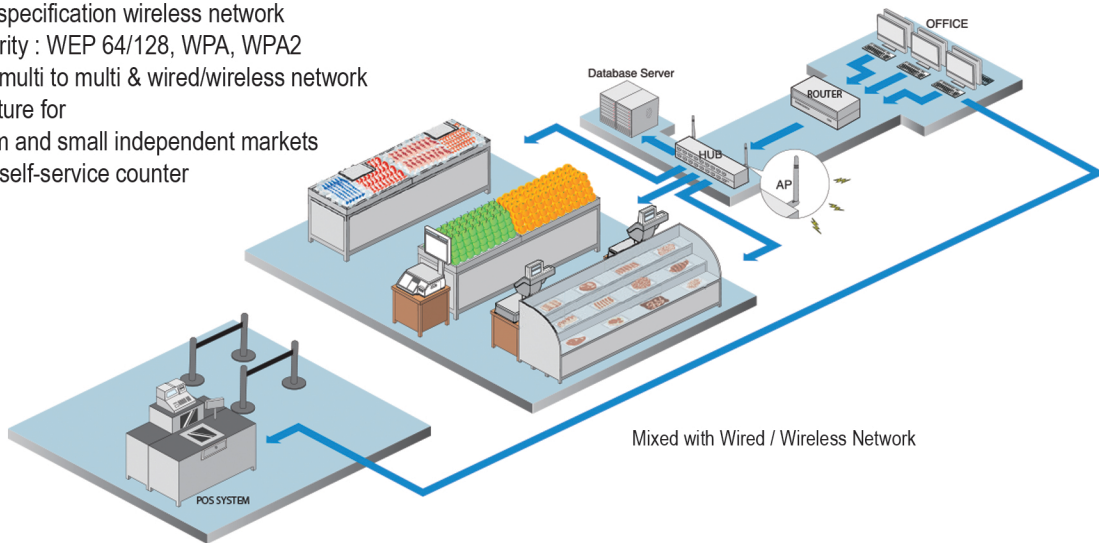
Barcode

Almost every conventional 1-Dimensional barcode types are available.

- UPC, EAN13, EAN13A5, I2OF5, CODE128, CODE39, CODE93, CODABAR, IATA2OF5

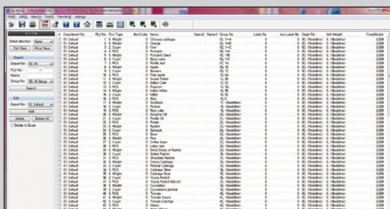
Network System

- TCP/IP communication protocol
- IEEE802.11g specification wireless network
- Wireless security : WEP 64/128, WPA, WPA2
- One to one & multi to multi & wired/wireless network
- Network structure for
 - Large, medium and small independent markets
 - Pre-pack and self-service counter
 - Hyper marke



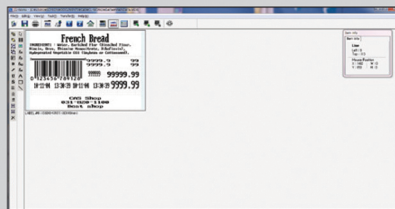
PC software: CL-Works

CL-501 supports PLU programming, store data, sales report, label editor and much more. You can control all the program data by CL-Works.



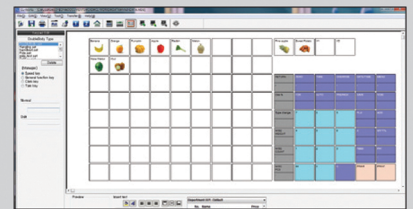
PLU Editor

- Enable easy control, of PLU
- Allows PLUs management by excel



Label Editor

- 20 modifiable label formats
- Easy downloading of label formats



Keypad Editor

- Easy to setup and download
- Key design color image Keypad supported

CL-501 SERIES

Barcode Label Indicator



FUNCTION SUMMARY

Display:

- 5" Color TFT, both in vendor's and buyer's side
- Color display allow to show pictures of products during sales operations, as well as advertising images when the scale is not operating

PLU:

- It can edit 1-999999 PLUs data storage capacity
- 400 pictures storage capacity

Report:

- 8000pcs single selling detail and auto-delete the former record if full storage
- Annual report, monthly report, daily report, clerk report, etc

Port:

- Upload and download data via Ethernet, import and export data via USB, aviation plug can connect with multiple load cell externally

Keyboard:

- Membrane keyboard easy for input
- Fast to operate, easy to clean and water-proof

Sales:

- Support package by fixed weight, package by fixed price and piece together function
- fast price-changing, insert the weight by hand, tare digitally, discount by hand or automatically

Stock:

- To realize purchasing-selling-stock management function by using PC software
- Profit inquiry

Printing:

- Resolution: 8dot/mm; printing speed: 100mm/s
- Support various fonts, capital letter, lower case letter and various graphics
- Design printing format at freedom
- Label width ≤62; The height can be designed at will
- Optional paper type: label, linerless label, continuous thermal paper

Barcode:

- Support one-dimensional barcode and two-dimensional barcode

Optional:

- Wi-Fi Module for wireless
- Inquiry stock datas and sales record by mobile device (smartphone, tablet,...)
- Rechargeable battery



SPECIFICATIONS

Model	CL-501
Keyboard	Hotkeys: 56 Function Key: 27
Paper	Label: Width ≤62mm
Printing performance	Density: 8dot/mm; width: 58mm Speed: 100mm/s; Printer Head Life: 100km

